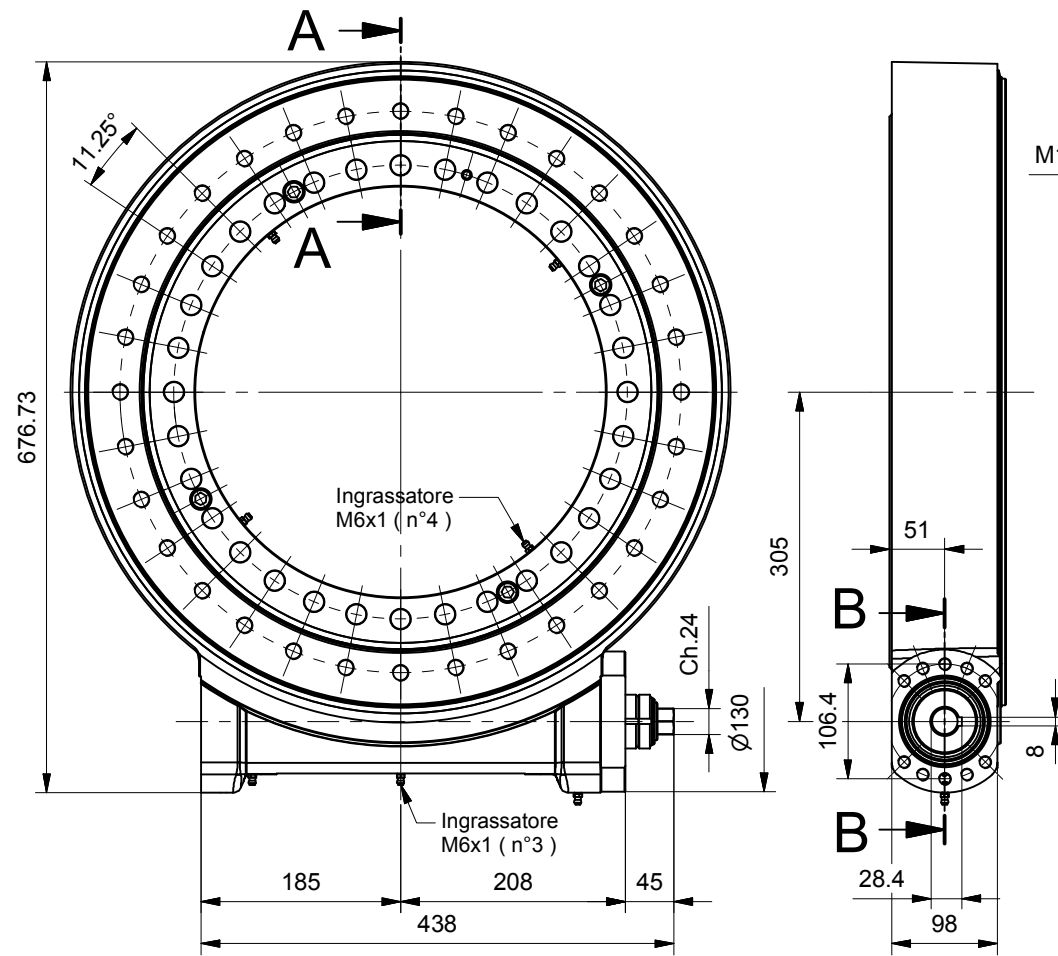
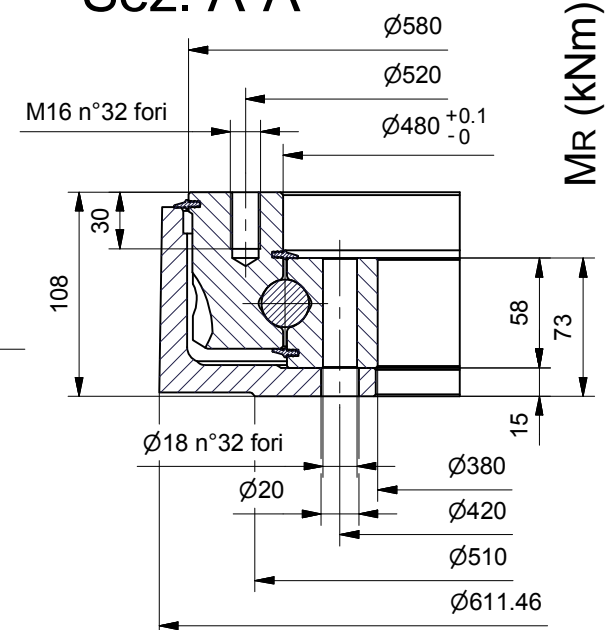


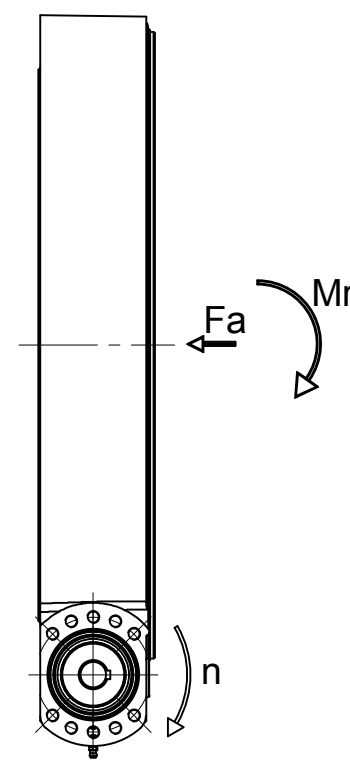
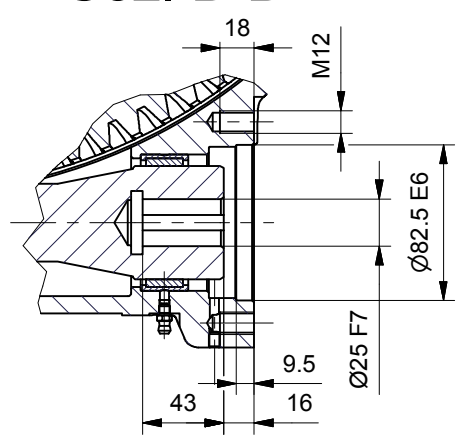
DIMENSIONI D'INGOMBRO - OVERALL DIMENSIONS



Sez. A-A

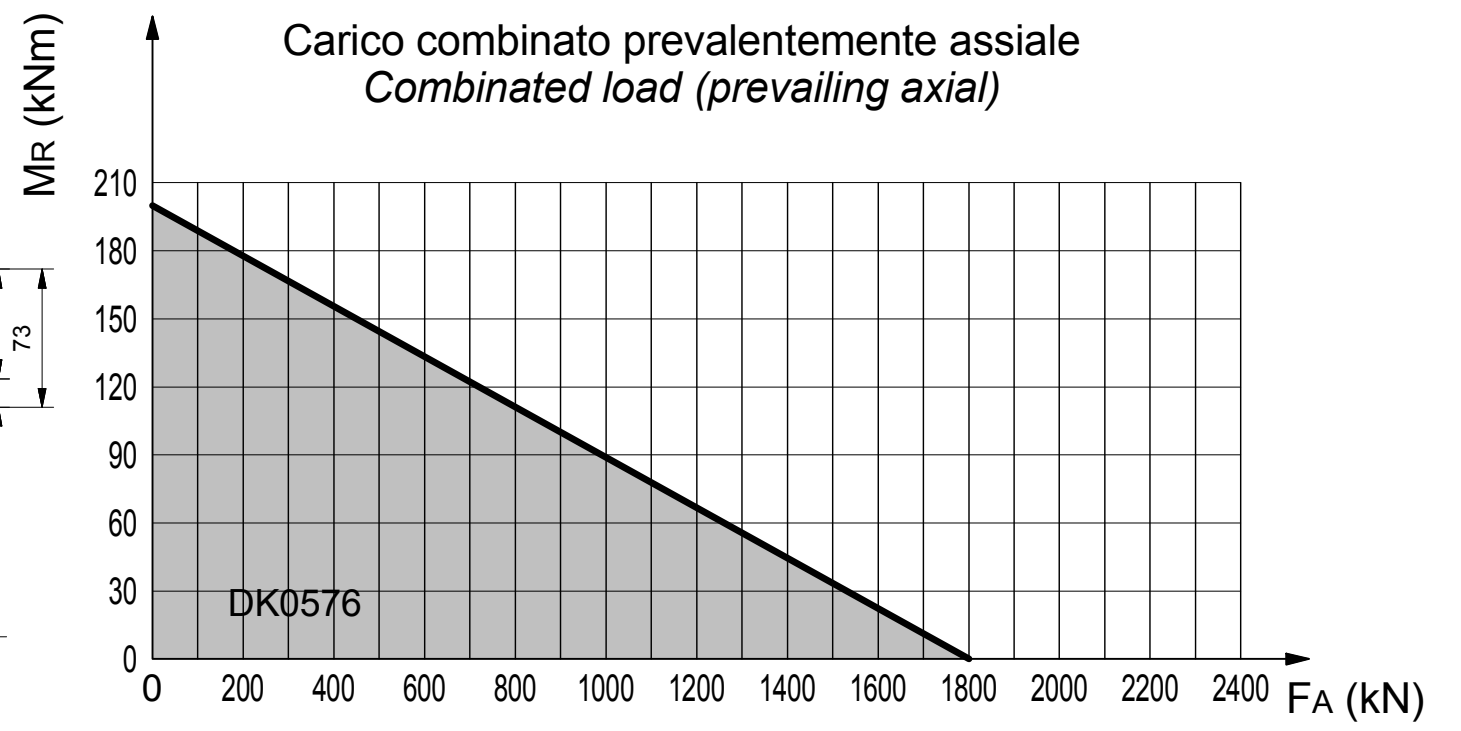


Sez. B-B

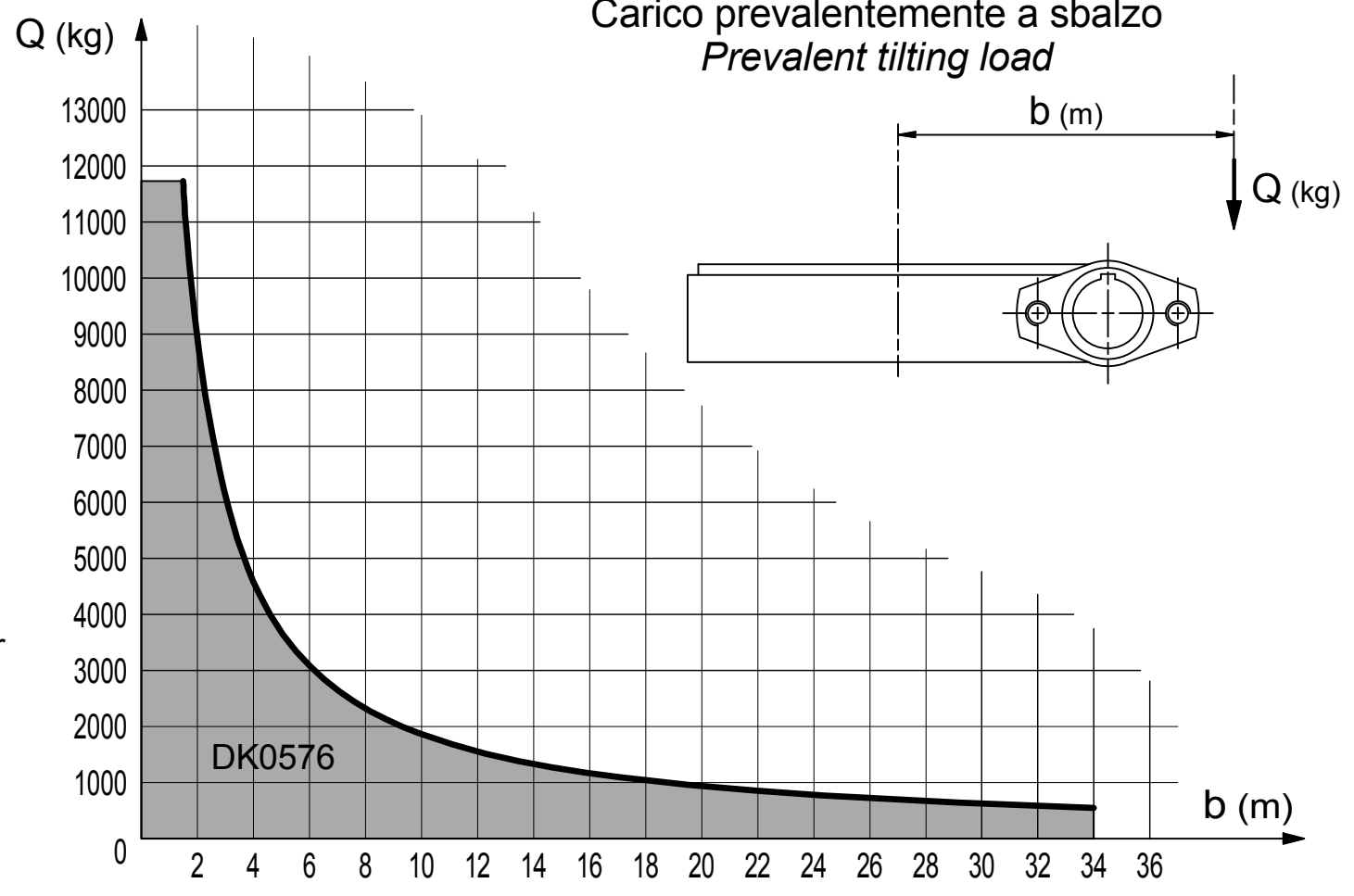


DIAGRAMMI DEI CARICHI - LOADS DIAGRAMS

Carico combinato prevalentemente assiale
Combinated load (prevailing axial)



Carico prevalentemente a sbalzo
Prevalent tilting load



DATI TECNICI - TECHNICAL DATA

Rapporto di riduzione
Gear ratio $r = 1 : 93$

Giri max. ingresso
Max. input rpm $n = 150 \text{ rpm}$

Coppia max. uscita
Max. output torque $\left\{ \begin{array}{l} \text{serv. continuo} \\ \text{continuous} \\ \text{di picco} \\ \text{peak} \end{array} \right.$

$M_u = 9200 \text{ Nm}$

$M_p = 18750 \text{ Nm}$

Coppia max. uscita in stallo (C.frenante)
Max stall output torque (Braking torque)

$M_f = 25600 \text{ Nm}$

Non è garantita la irreversibilità del moto
Total nonreversing is not guaranteed

Peso
Weight $\text{kg } 117,5$



42048 RUBIERA (RE) ITALY

SCHEDA TECNICA - TECHNICAL SHEET
GRUPPO RALLA DI ROTAZIONE - SLEWING RING
DK576

COD. GRXDK05760 REV. 04