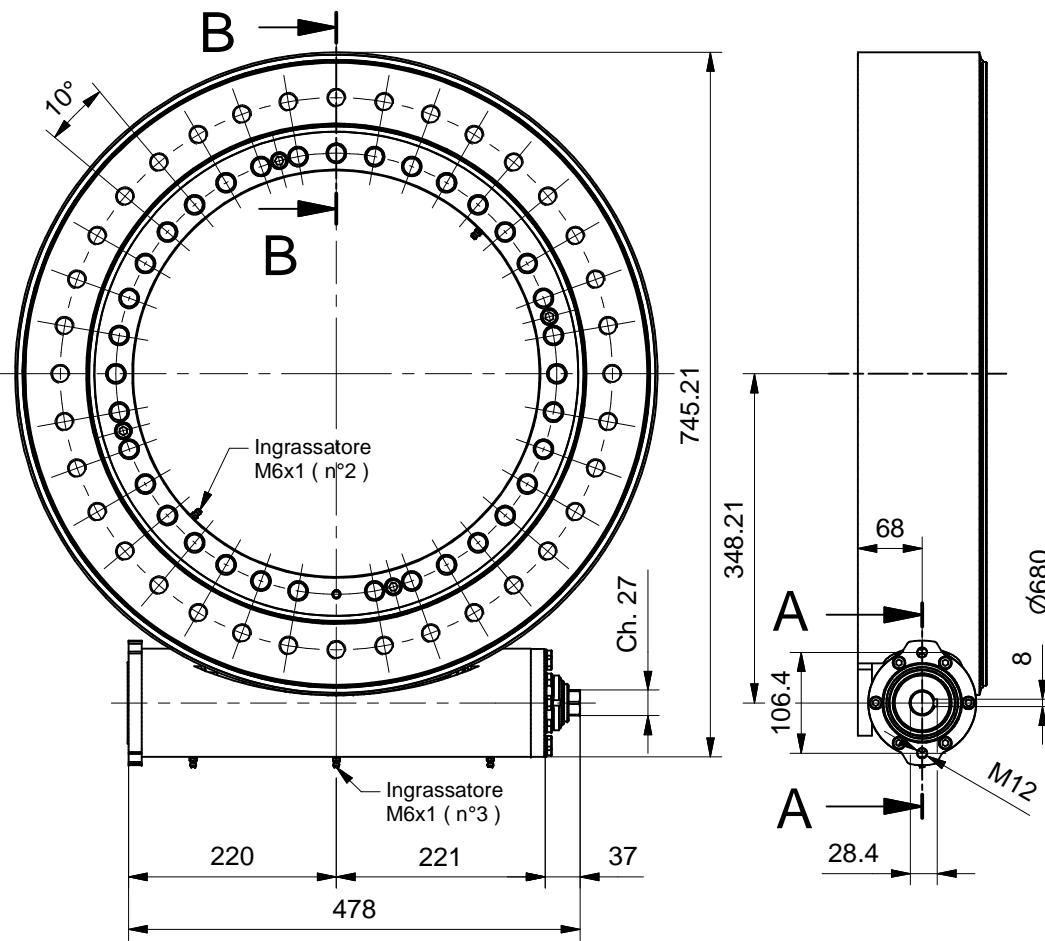


DIMENSIONI D'INGOMBRO - OVERALL DIMENSIONS



DATI TECNICI - TECHNICAL DATA

Rapporto di riduzione
Gear ratio $r = 1 : 91$

Giri max. ingresso
Max. input rpm $n = 150 \text{ rpm}$

Coppia max. ingresso
Max. input torque $M_i = 195 \text{ Nm}$
 $M_p = 400 \text{ Nm}$

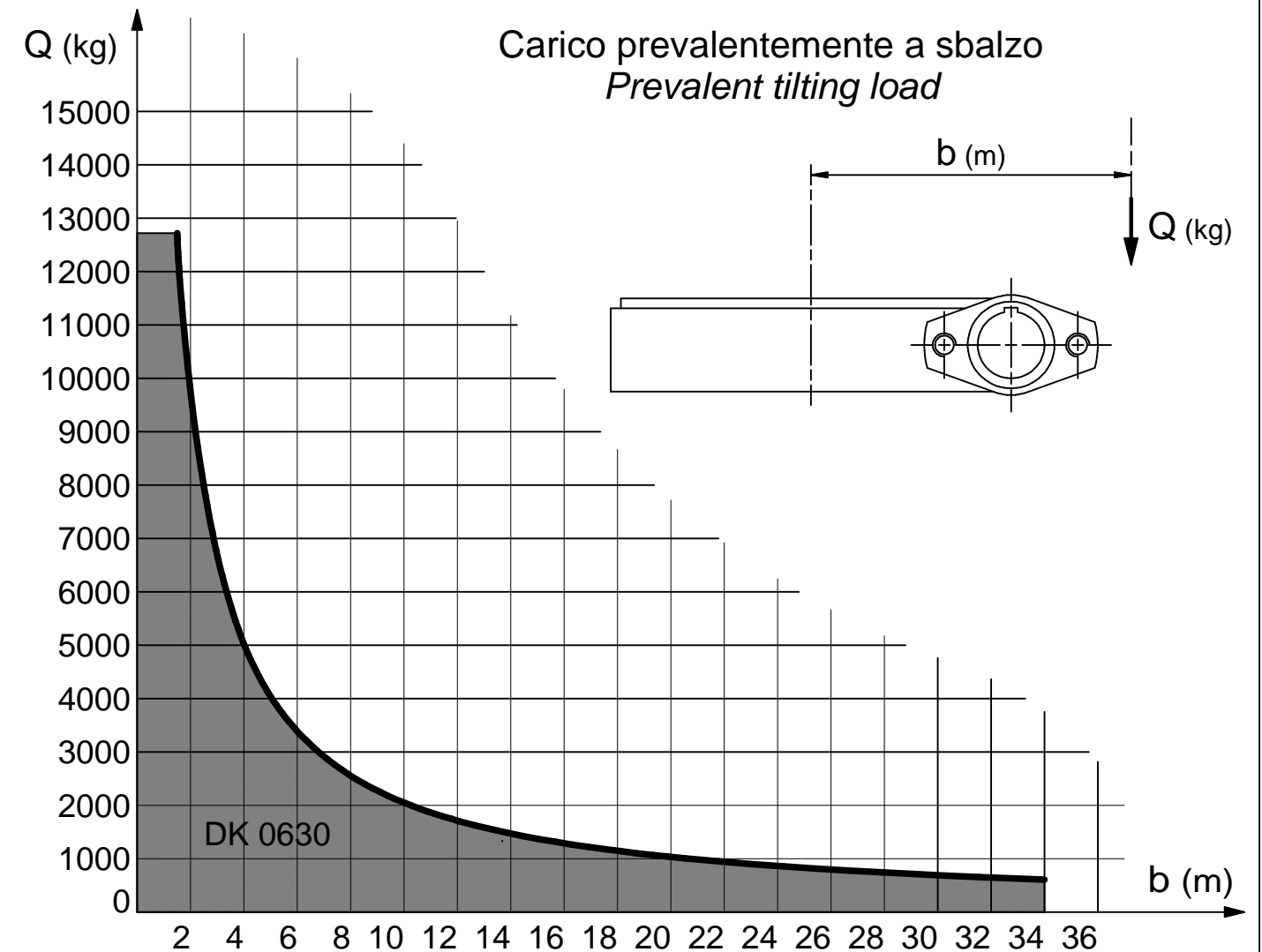
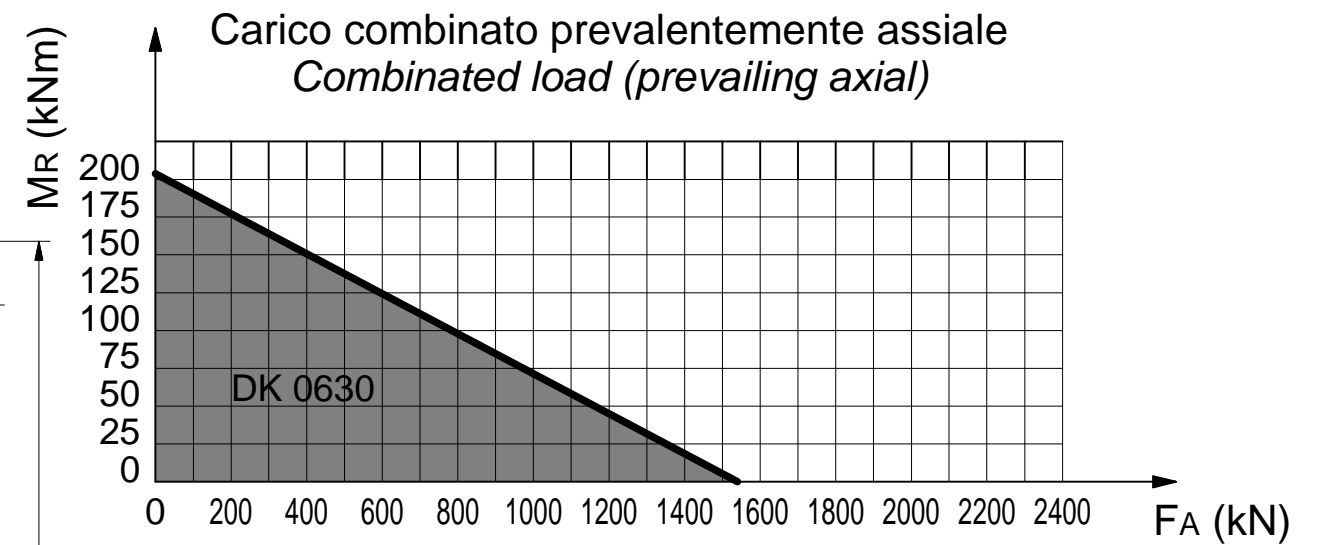
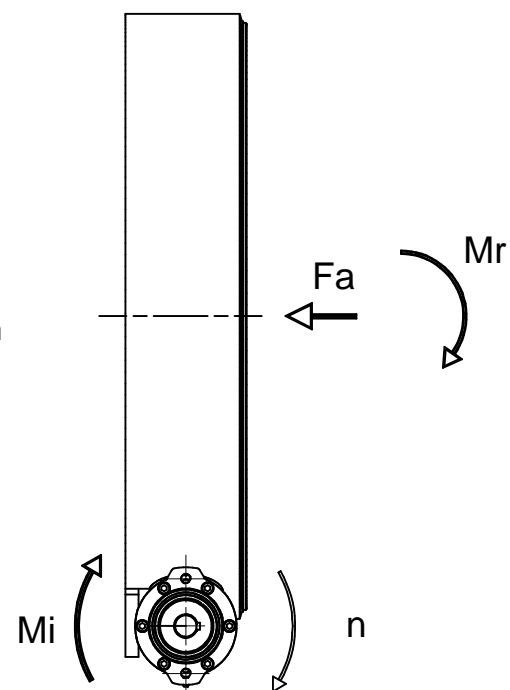
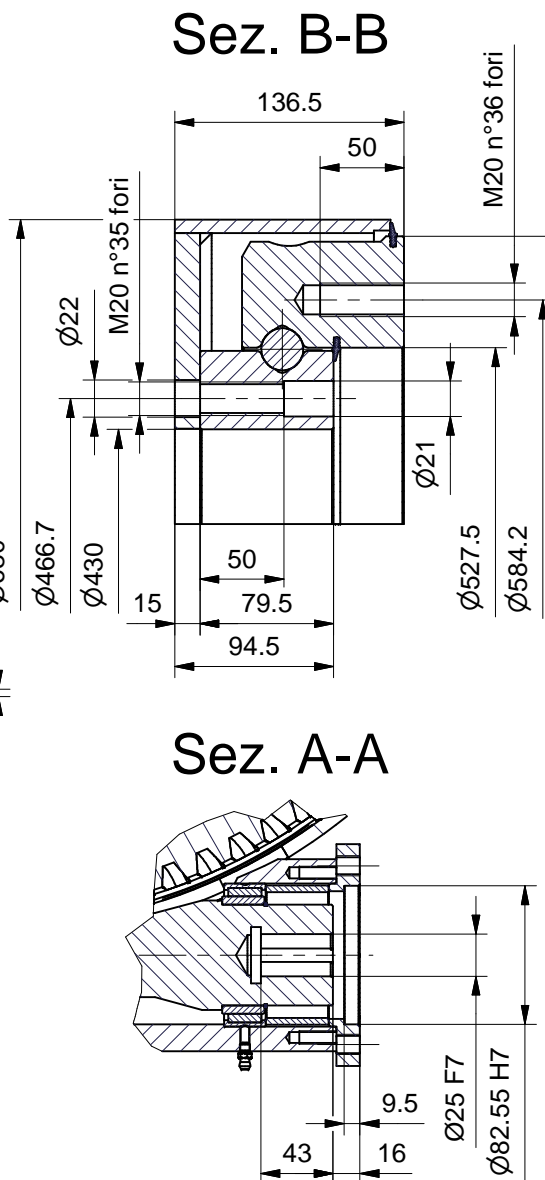
Coppia max. uscita
Max. output torque (rendimento - efficiency 70%)
 $M_u = 12.420 \text{ Nm}$
 $M_p = 25.480 \text{ Nm}$

Coppia max. uscita in stallo (C.frenante)
Max stall output torque (Braking torque) $M_r = 37.800 \text{ Nm}$

Non è garantita la irreversibilità del moto
Total nonreversing is not guaranteed

Peso
Weight $\text{kg } 178,4$

DIAGRAMMI DEI CARICHI - LOADS DIAGRAMS



42048 RUBIERA (RE) ITALY

SCHEDA TECNICA - TECHNICAL SHEET
GRUPPO RALLA DI ROTAZIONE - SLEWING RING
DK0630 - CORPO IN ACCIAIO - TENUTA LABBRO
DK0630 - STEEL CASE - LIP SEAL

COD. GRRDK06300 REV. 01