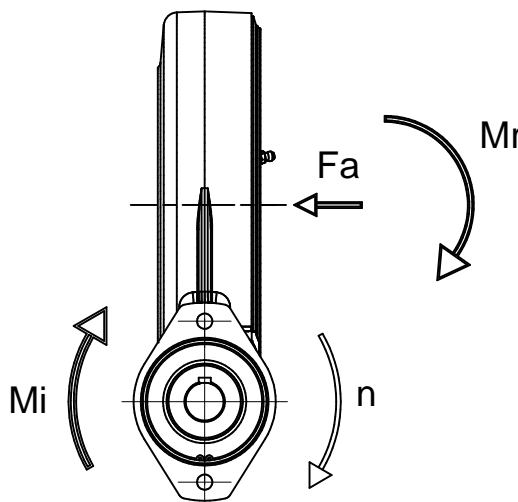
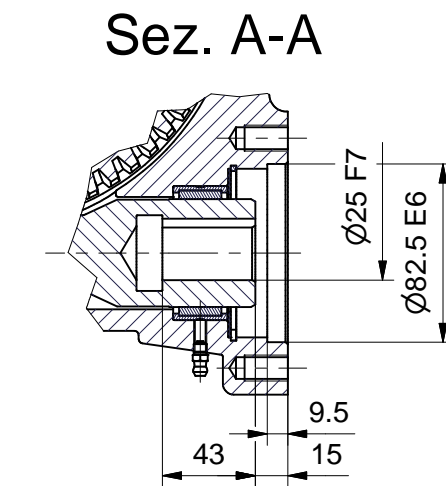
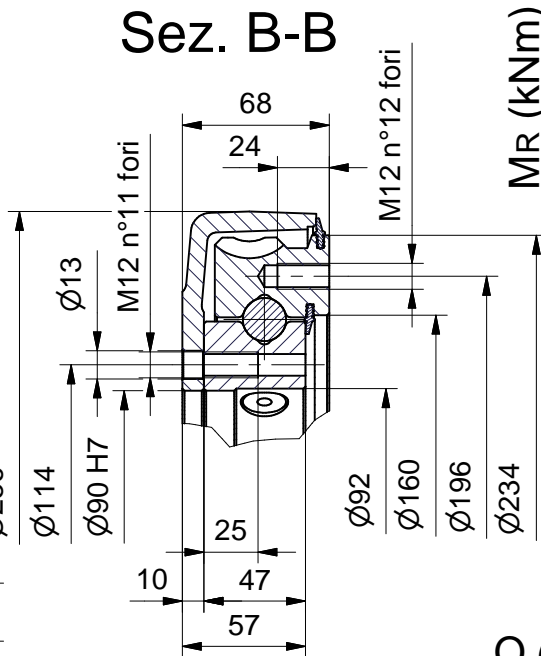
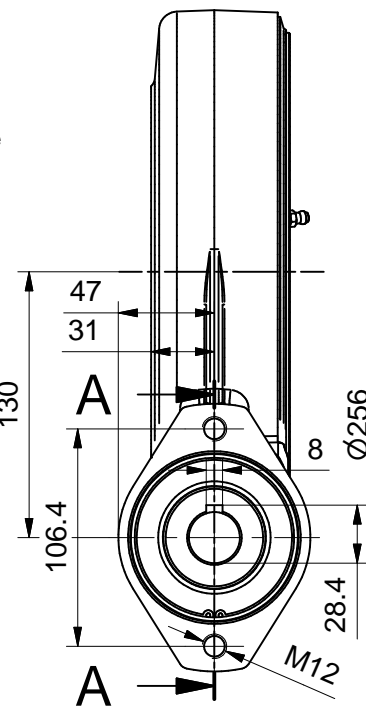
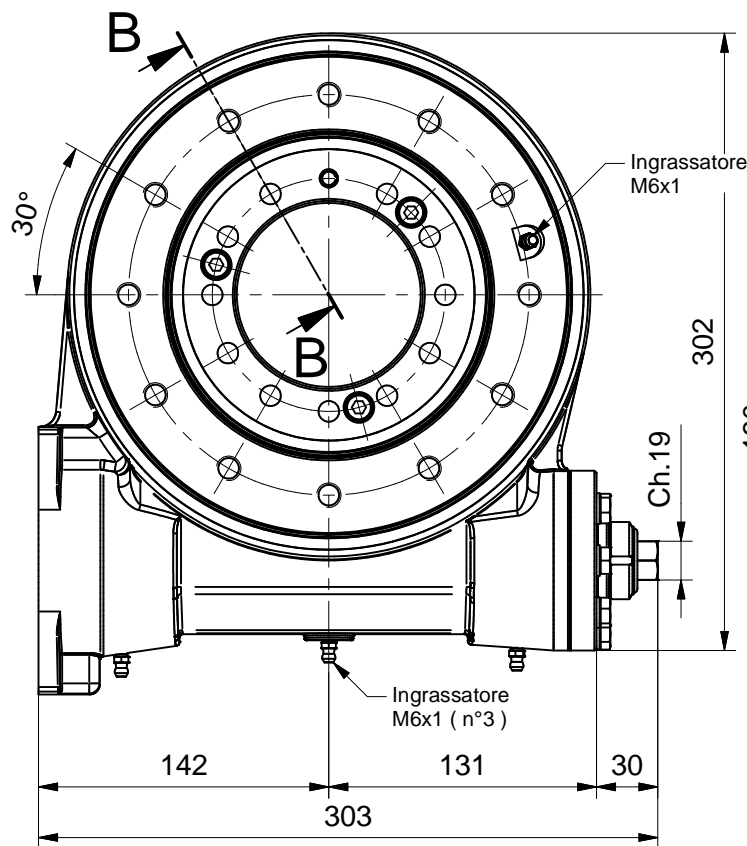
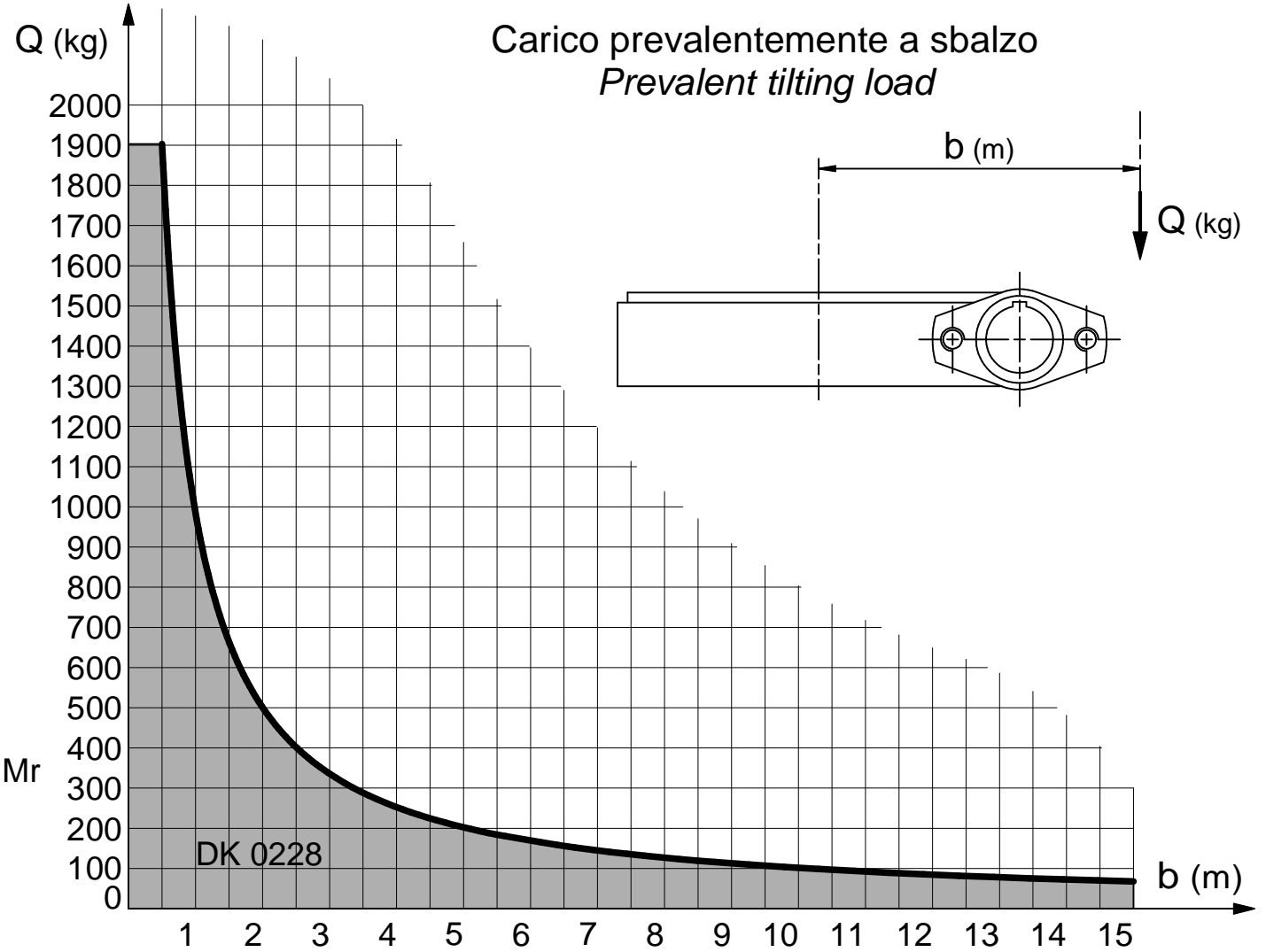
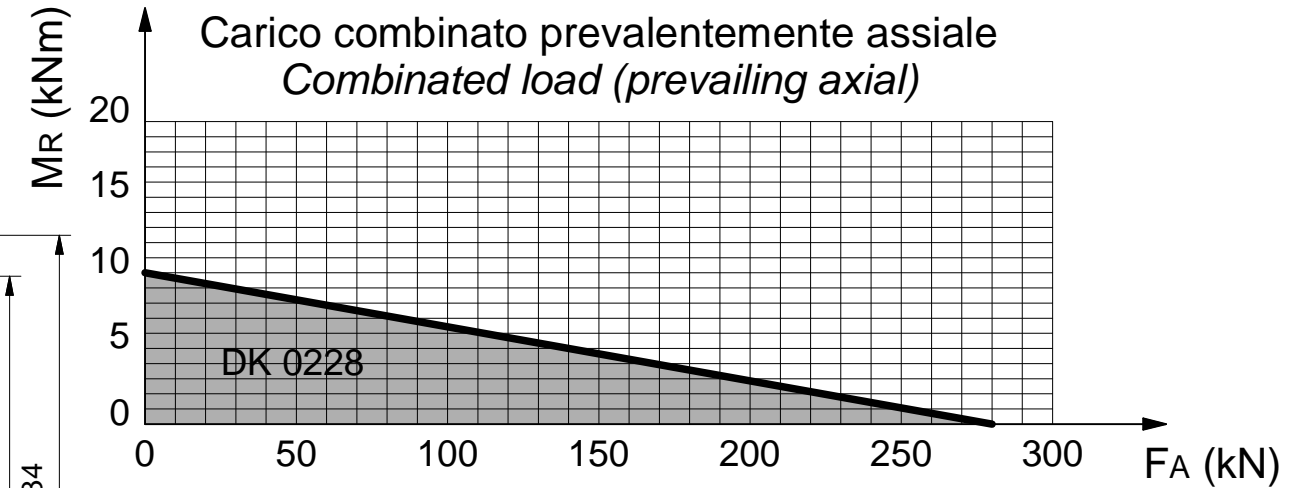


DIMENSIONI D'INGOMBRO - OVERALL DIMENSIONS



DIAGRAMMI DEI CARICHI - LOADS DIAGRAMS



DATI TECNICI - TECHNICAL DATA

Rapporto di riduzione
Gear ratio $r = 1 : 63$

Giri max. ingresso
Max. input rpm $n = 215 \text{ rpm}$

Coppia max. ingresso
Max. input torque $M_i = 32 \text{ Nm}$
 $M_p = 50 \text{ Nm}$

Coppia max. uscita
Max. output torque (rendimento - efficiency 70%)
 $M_u = 1.410 \text{ Nm}$
 $M_p = 2.200 \text{ Nm}$

Coppia max. uscita in stallo (C.frenante)
Max stall output torque (Braking torque) $M_r = 2.500 \text{ Nm}$

Non è garantita la irreversibilità del moto
Total nonreversing is not guaranteed

Peso
Weight $\text{kg } 18.5$



42048 RUBIERA (RE) ITALY

SCHEDA TECNICA - TECHNICAL SHEET
GRUPPO RALLA DI ROTAZIONE - SLEWING RING
DK0228 - CORPO IN ALLUMINIO - TENUTA A LABBRO
DK0228 - ALUMINIUM CASE - LIP SEAL

COD. GRADK02280 REV. 02